

The Bothnian Bay 2021-2030 – Inter-municipal cooperation for those who live, visit and work at the coast and in the archipelago

*A strategy for joint coastal development in Haparanda,
Kalix, Luleå, Piteå and Skellefteå municipalities*



Bottenvikens skärgård – inter-municipal cooperation since 2006

The Bothnian Bay Coastal inter-municipal cooperation is an alliance that extends across both municipal and county boundaries. The cooperation includes the municipalities of Haparanda, Kalix, Luleå, Piteå and Skellefteå and was initiated in 2006. Fundamental to the arrangement is a common view of the coast and archipelago as an important asset for the municipalities' development and attractiveness and that you can achieve more if you cooperate. By coordinating municipal resources, the five municipalities aim to develop the coastal area and create opportunities for outdoor life and unique experiences. The starting point for the work is a common strategy that covers the period 2021-2030.

A strategy for inter-municipal cooperation 2021-2030

Aim and purpose

The Bothnian Bay Coastal Inter-Municipal Cooperation has several purposes. Through collaboration and common foundation and goals, the municipalities strive to:

- develop a cohesive coast and archipelago that provides opportunities for well-being, a rich outdoor life and unique experiences for residents in the municipalities as well as visitors,
- coordinate and exchange joint municipal resources and thus rationalize the development of coast and archipelago of the of Bothnian Bay,
- enable sustainable development which, based on the area's unique natural and cultural values and climatic conditions, can be used and enjoyed all year round,
- create conditions for a positive development for the entrepreneurs in the tourist industry who have the coastal area as a base for their activities,
- contribute to the goals set in municipal and regional development strategies being achieved.
- promote development characterized by ecological, economic and social sustainability and contribute to meeting the goals set within Agenda 2030.

Impact goals

The work within the Bothnian Bay Coastal Inter-Municipal Cooperation is part of a larger whole and contributes to meeting set goals in municipal and regional strategies, which in turn are part of the realization of national strategies and Agenda 2030.

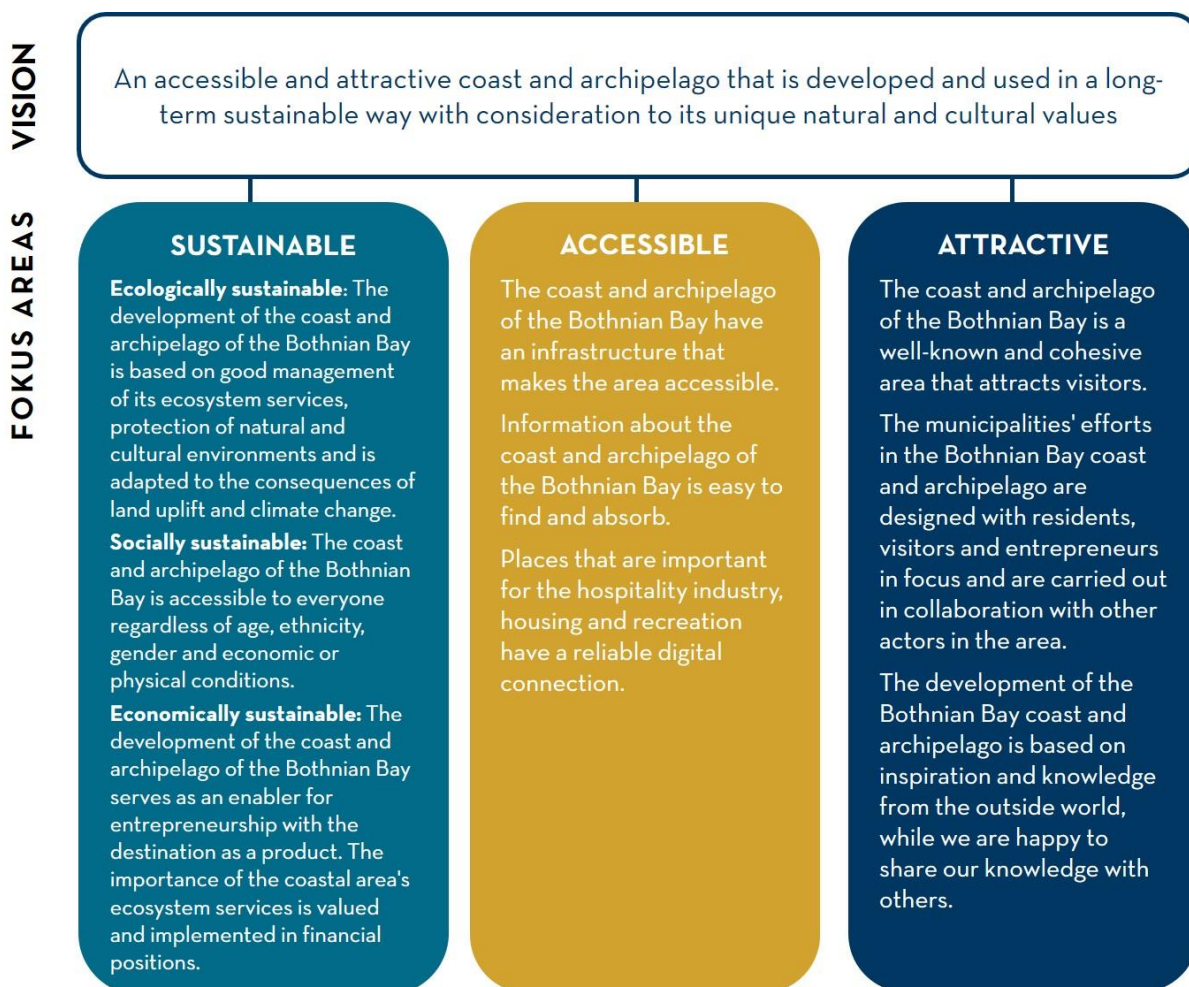
Set impact goals for the work:

- Local and regional development in both urban and rural areas,
- attractive municipalities and regions,
- good public health through good opportunities for outdoor life and recreation,
- competitive and innovative entrepreneurship and entrepreneurship in the tourist industry and
- a balanced marine environment, flourishing coastal areas and archipelagos so that

- economic, social and environmental sustainability can be achieved.

Vision and focus areas

The strategy is based on a vision that is divided into three focus areas, which in turn contain three goals.



Implementation of municipalities

The foundation for the work is a well-functioning municipal cooperation where the municipalities jointly take responsibility for methodically, consciously and carefully developing the coast and archipelago of the Bothnian Bay.

The strategy is realized by the municipalities:

- 1) Cooperates and coordinates common municipal resources,
- 2) Creates more resources by applying for project funding/co-financing,
- 3) Develops an infrastructure for recreation, outdoor life and business,
- 4) Informs about the coast and archipelago of the Bothnian Bay and the efforts that are made,
- 5) Make visible the values of the coast and the archipelago for societal development,
- 6) Are updated in matters concerning the coast and archipelago,
- 7) Seeks collaboration through arenas, networks and dialogue and
- 8) Follow up the implementation and its effects.



Haparanda
stad



KALIX KOMMUN



LULEÅ KOMMUN



Piteå kommun



Skellefteå
kommun